

## VILLAS OF TORINO – APPROVED SHINGLES AND OFF-RIDGE VENTS



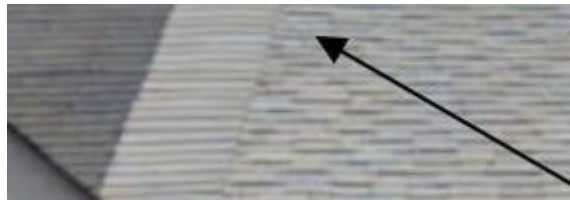
### TAMKO HERITAGE WEATHERED WOOD 30-YR ARCHITECTURAL

**1-800-641-4691**

**[www.tamko.com](http://www.tamko.com)**

### **INSTALLATION REQUIREMENTS**

1. A transitional ridge cap must separate adjacent roof installations. For example:



2. Solar panels and mounting hardware shall not block, cover or obstruct said transitional ridge cap in a manner that prevents a roofing contractor from repairing or replacing it in the future.
3. The approved off-ridge vents are LOMANCO 770-D Brown as illustrated below:



Revised 11/01/2023