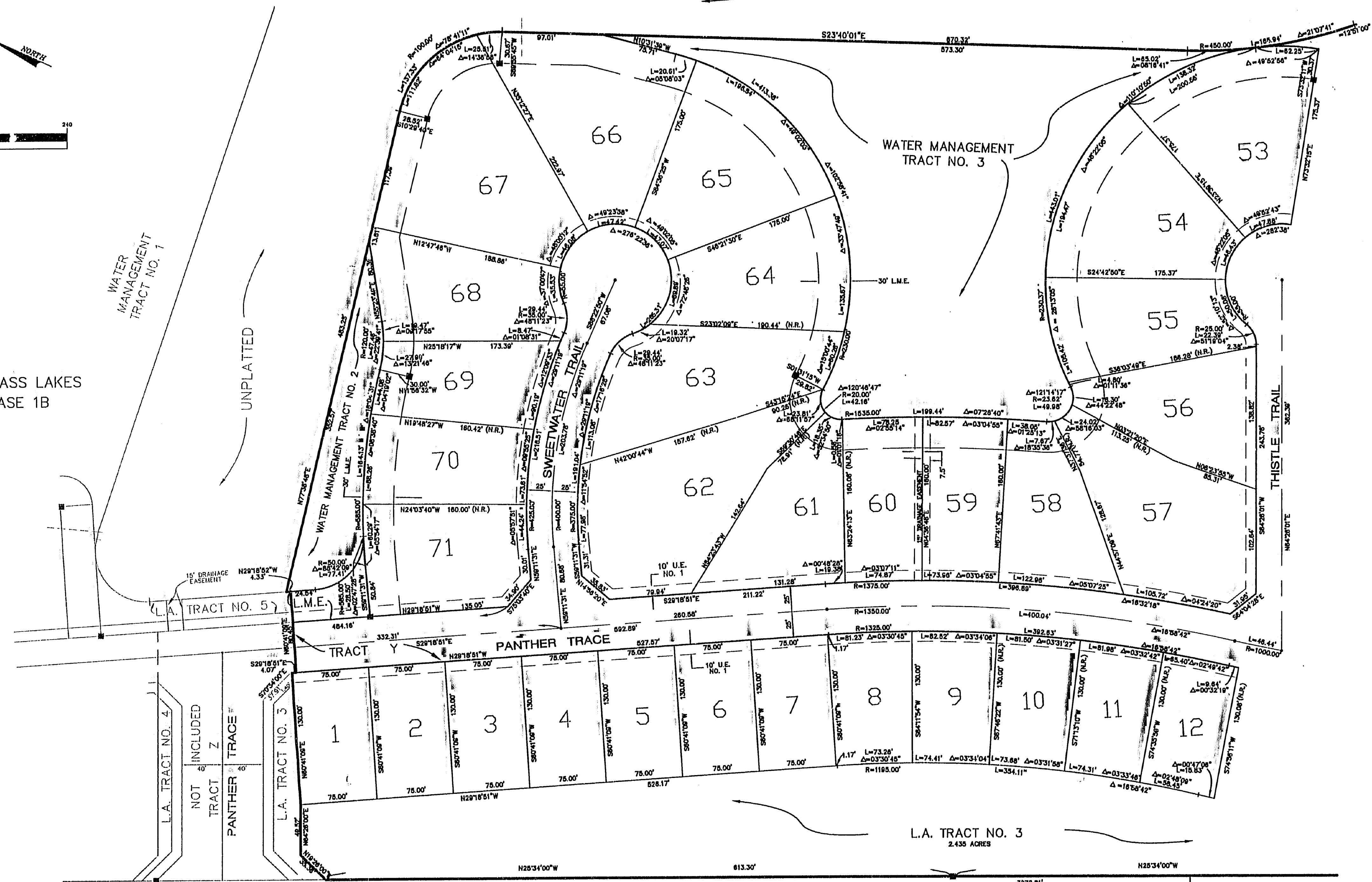
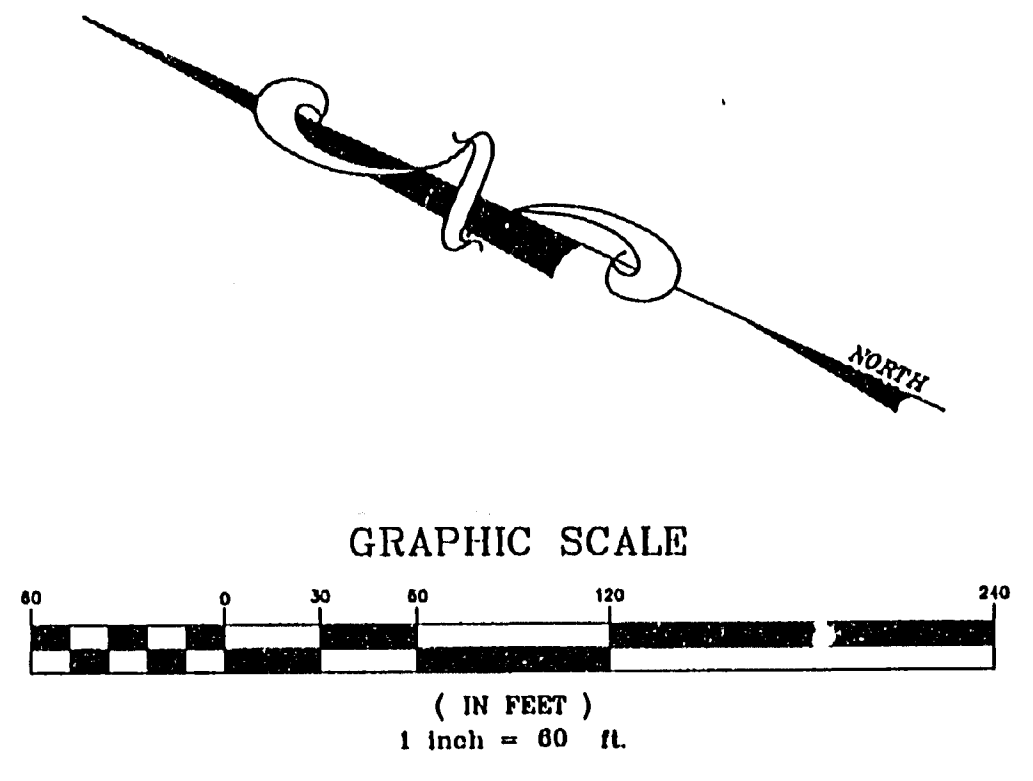


SAWGRASS LAKES PLAT NO. 1, P.U.D. (PHASE 1A)

BEING A PORTION OF SECTIONS 20 AND 29,
TOWNSHIP 37 SOUTH, RANGE 40 EAST
CITY OF PORT ST. LUCIE, ST. LUCIE COUNTY, FLORIDA

UNPLATTED

CERTIFICATE OF APPROVAL OF THE CLERK OF THE CIRCUIT COURT
STATE OF FLORIDA
COUNTY OF ST. LUCIE
I, JOANNE HOLMAN, CLERK OF THE CIRCUIT COURT OF ST. LUCIE COUNTY, FLORIDA, DO HEREBY CERTIFY THAT THIS PLAT HAS BEEN EXAMINED AND THAT IT COMPLIES WITH ALL THE REQUIREMENTS OF THE LAWS OF FLORIDA PERTAINING TO MAPS AND PLATS, AND THAT THIS PLAT HAS BEEN FILE FOR RECORD IN PLAT BOOK 37, PAGE 4A OF THE PUBLIC RECORDS OF ST. LUCIE COUNTY, FLORIDA, THIS 13 DAY OF April, 1998.
JOANNE HOLMAN, CLERK OF CIRCUIT COURT.
ST. LUCIE COUNTY, FLORIDA
Dr. James Noel, D.C.
CLERK OF CIRCUIT COURT
ST. LUCIE COUNTY, FLORIDA



SEE SHEET 4 OF 4

SEE SHEET 3 OF 4

THE BEARINGS HEREON ARE REFERRED TO THE CENTERLINE OF DARWIN BOULEVARD BEARING S 25°34'00" E AS SHOWN ON THE PLAT OF PORT ST. LUCIE SECTION TWENTY TWO AS RECORDED IN PLAT BOOK 13, PAGE 28, PUBLIC RECORDS OF ST. LUCIE COUNTY, FLORIDA.

- LEGEND**
- = PERMANENT CONTROL POINT "RLS 4275"
 - = PERMANENT REFERENCE MONUMENT "RLS 4275"
 - L.A. = LANDSCAPE AREA
 - U.E. = UTILITY EASEMENT
 - N.R. = NON-RADIAL
 - △ = CENTRAL ANGLE
 - L = ARC LENGTH
 - R = RADIUS
 - CB = CHORD BEARING
 - L.M.E. = LAKE MAINTENANCE EASEMENT

PORT ST. LUCIE SECTION TWENTY TWO
(PLAT BOOK 13, PAGE 28, ST. LUCIE COUNTY, FLORIDA)

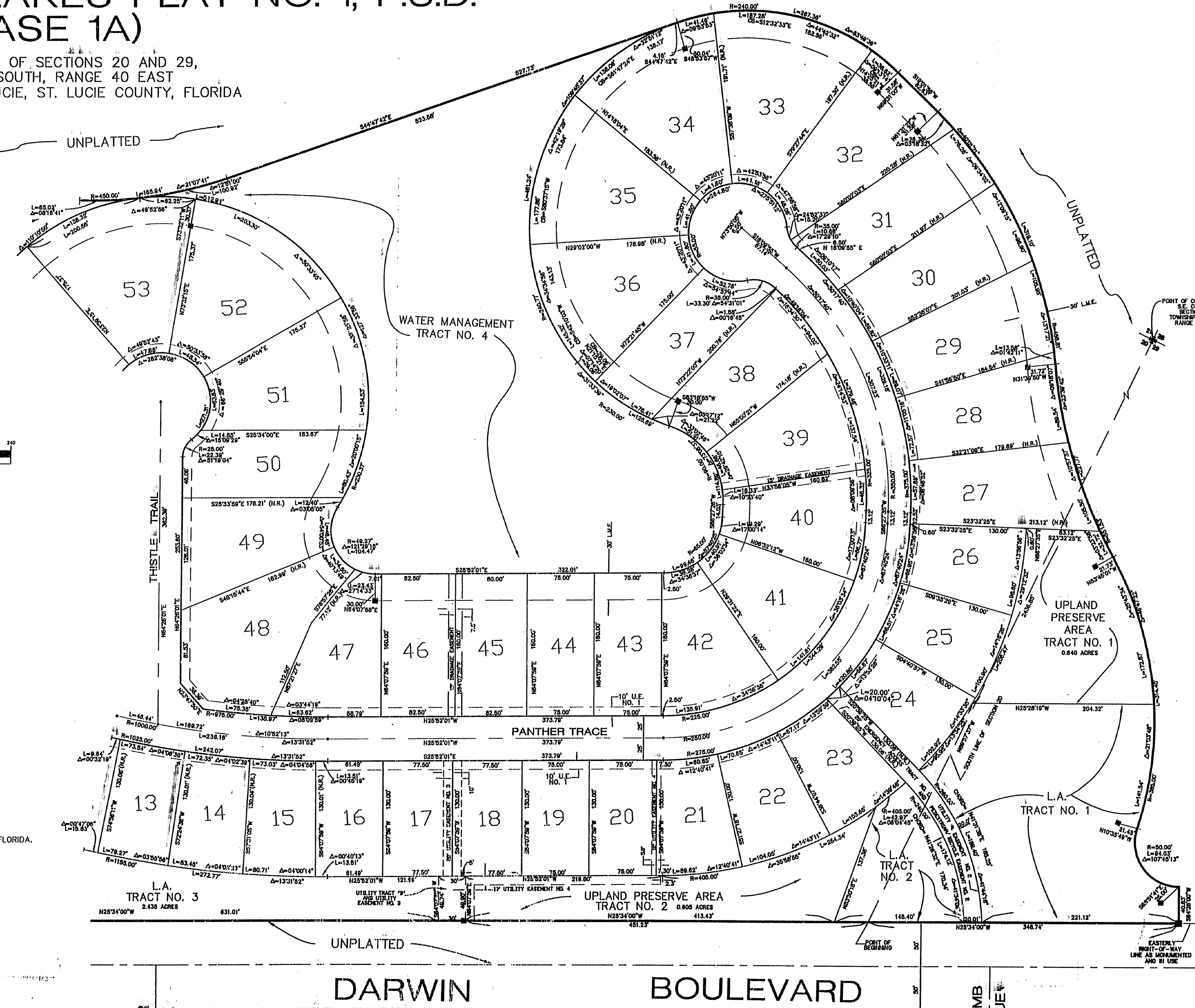
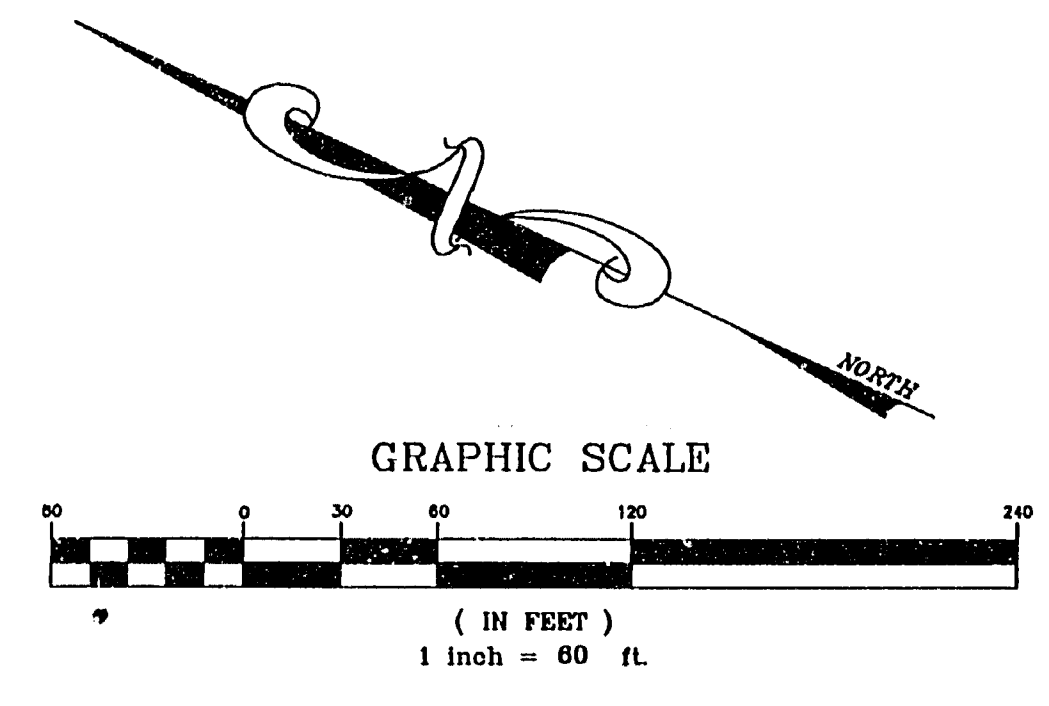
ENGINEERS INC.
CIVILIZATION ENGINEERED
203 WEST 3rd STREET
STUART, FLORIDA 34994
PHONE (561)283-1413
FAX (561)220-7881
800 S. PARROTT AVE.
OKEECHOBEE, FLORIDA 33472
PHONE (941)763-8050

PB 37 PG 4A #2713

SAWGRASS LAKES PLAT NO. 1, P.U.D. (PHASE 1A)

BEING A PORTION OF SECTIONS 20 AND 29,
TOWNSHIP 37 SOUTH, RANGE 40 EAST
CITY OF PORT ST. LUCIE, ST. LUCIE COUNTY, FLORIDA

CERTIFICATE OF APPROVAL OF THE CLERK OF THE CIRCUIT COURT
STATE OF FLORIDA
COUNTY OF ST. LUCIE
I, JOANNE HOLMAN, CLERK OF THE CIRCUIT COURT OF ST. LUCIE COUNTY, FLORIDA, DO HEREBY CERTIFY THAT THIS PLAT HAS BEEN EXAMINED, AND THAT IT COMPLIES WITH ALL THE REQUIREMENTS OF THE LAWS OF FLORIDA PERTAINING TO MAPS AND PLATS, AND THAT THIS PLAT HAS BEEN FILE FOR RECORD IN PLAT BOOK 37, PAGE 4B, OF THE PUBLIC RECORDS OF ST. LUCIE COUNTY, FLORIDA, THIS 19th DAY OF FEBRUARY, 1997.
By: Pratt Noel, Inc.
CLERK OF CIRCUIT COURT
ST. LUCIE COUNTY, FLORIDA



THE BEARINGS HEREON ARE REFERENCED TO THE CENTERLINE OF DARWIN BOULEVARD BEARING S 25°34'00" E AS SHOWN ON THE PLAT OF PORT ST. LUCIE SECTION TWENTY TWO AS RECORDED IN PLAT BOOK 13, PAGE 2B, PUBLIC RECORDS OF ST. LUCIE COUNTY, FLORIDA.

- LEGEND**
- = PERMANENT CONTROL POINT "RLS 4275"
 - = PERMANENT REFERENCE MONUMENT "RLS 4275"
 - L.A. = LANDSCAPE AREA
 - U.E. = UTILITY EASEMENT
 - N.R. = NON-RADIAL
 - △ = CENTRAL ANGLE
 - L = ARC LENGTH
 - R = RADIUS
 - CB = CHORD BEARING
 - L.M.E. = LAKE MAINTENANCE EASEMENT

SEE SHEET 2 OF 4

P.B. 37 PG 4B #2714

PORT ST. LUCIE SECTION TWENTY TWO
(PLAT BOOK 13, PAGE 2B, ST. LUCIE COUNTY, FLORIDA)

ENGINEERS INC.
CIVILIZATION ENGINEERED
203 WEST 3rd STREET
STUART, FLORIDA 34994
PHONE (888)283-1413
FAX (861)220-7881

800 S. PARROTT AVE.
OKEECHOBEE, FLORIDA 33472
PHONE (941)763-6050

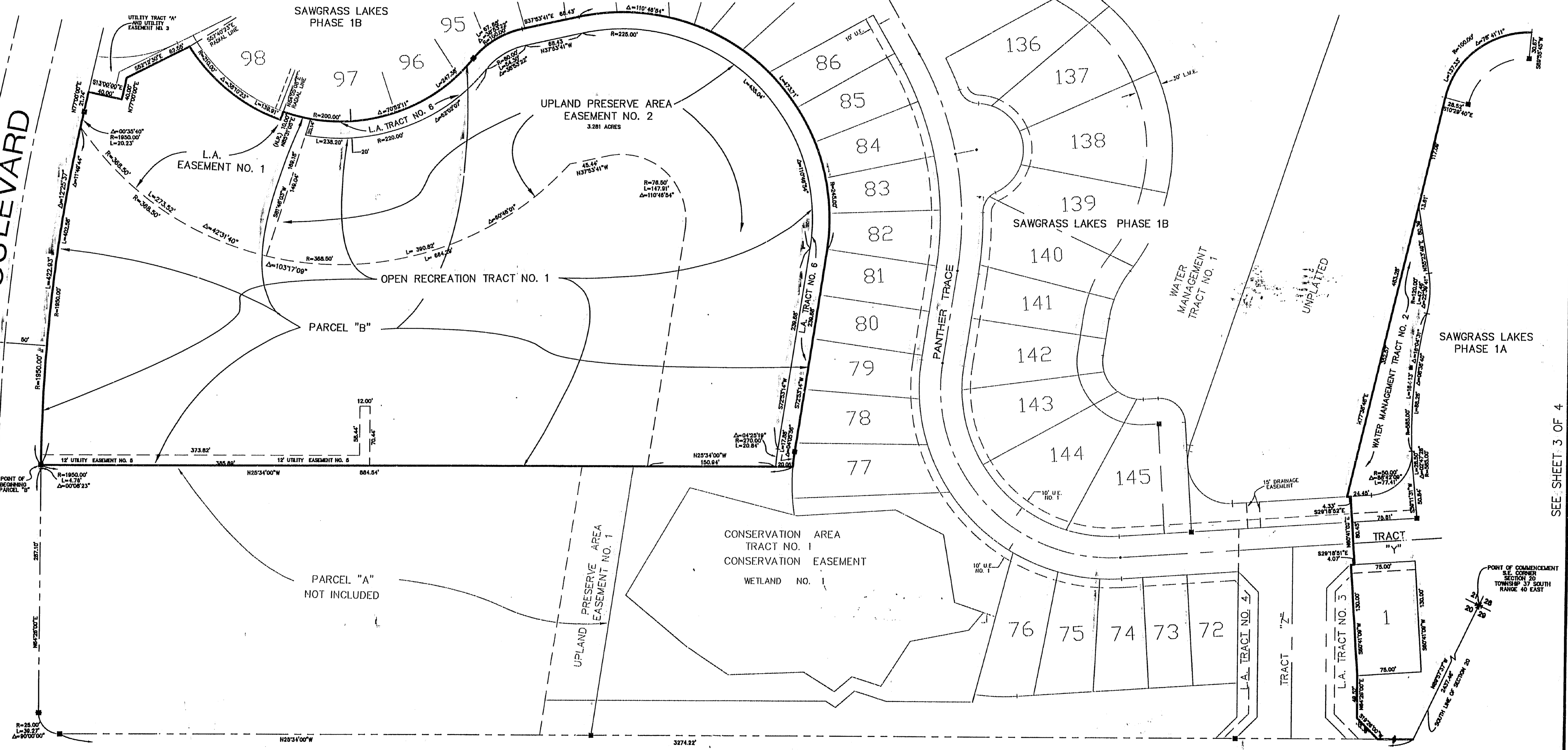
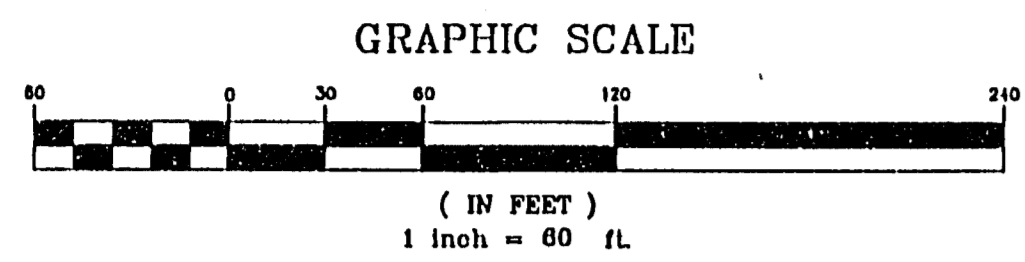
SAWGRASS LAKES PLAT NO. 1, P.U.D. (PHASE 1A)

BEING A PORTION OF SECTIONS 20 AND 29,
TOWNSHIP 37 SOUTH, RANGE 40 EAST
CITY OF PORT ST. LUCIE, ST. LUCIE COUNTY, FLORIDA

CERTIFICATE OF APPROVAL OF THE CLERK OF THE CIRCUIT COURT

STATE OF FLORIDA
COUNTY OF ST. LUCIE

I, JOANNE HOLMAN, CLERK OF THE CIRCUIT COURT OF ST. LUCIE COUNTY, FLORIDA, DO HEREBY CERTIFY THAT THIS PLAT HAS BEEN EXAMINED, AND THAT IT COMPLIES WITH ALL THE REQUIREMENTS OF THE LAWS OF FLORIDA PERTAINING TO MAPS AND PLATS, AND THAT THIS PLAT HAS BEEN FILE FOR RECORD IN PLAT BOOK 37, PAGE 4C OF THE PUBLIC RECORDS OF ST. LUCIE COUNTY, FLORIDA, THIS 11 DAY OF JANUARY, 2011.
BY: Deann Neal D.C.
CLERK OF CIRCUIT COURT
ST. LUCIE COUNTY, FLORIDA



FIRST REPLAT IN PORT ST. LUCIE SECTION FORTY TWO
(PLAT BOOK 18, PAGE 16, ST. LUCIE COUNTY, FLORIDA)

TULIP BOULEVARD

DARWIN BOULEVARD

FIFER AVENUE

LAIRO AVENUE

PORT ST. LUCIE SECTION TWENTY TWO
(PLAT BOOK 13, PAGE 28, ST. LUCIE COUNTY, FLORIDA)

- LEGEND**
- = PERMANENT CONTROL POINT "RLS 4275"
 - = PERMANENT REFERENCE MONUMENT "RLS 4275"
 - L.A. = LANDSCAPE AREA
 - U.E. = UTILITY EASEMENT
 - N.R. = NON-RADIAL
 - △ = CENTRAL ANGLE
 - L = ARC LENGTH
 - R = RADIUS
 - CB = CHORD BEARING
 - L.M.E. = LAKE MAINTENANCE EASEMENT

THE BEARINGS HEREON ARE REFERENCED TO THE CENTERLINE OF DARWIN BOULEVARD BEARING S 25°34'00" E AS SHOWN ON THE PLAT OF PORT ST. LUCIE SECTION TWENTY TWO AS RECORDED IN PLAT BOOK 13, PAGE 28, PUBLIC RECORDS OF ST. LUCIE COUNTY, FLORIDA.

ENGINEERS INC.
CIVILIZATION ENGINEERS

203 WEST 3rd STREET
STUART, FLORIDA 34994
PHONE (888)283-1413
FAX (888)220-7881

800 S. PARROTT AVE.
KEECHOOBEE, FLORIDA 33472
PHONE (941)763-8050

C:\Users\j\OneDrive\Documents\AS44 Thu Jan 15 10:38:15 2011 CRECH ENGINEERS, INC

PB37
PG 4C
#2715